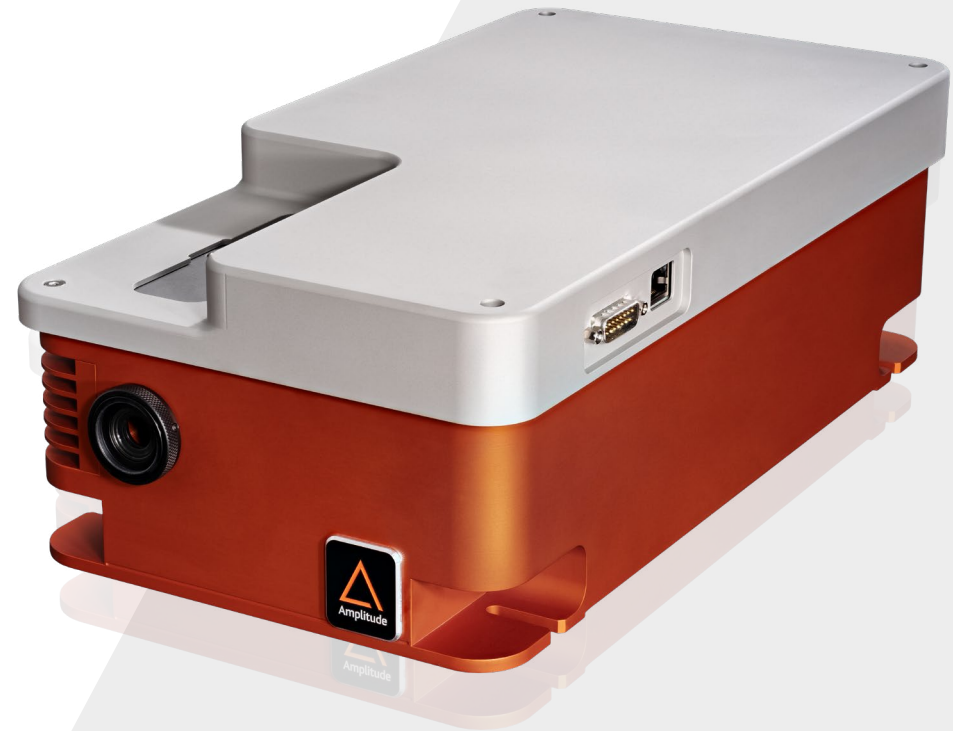


BEAM

Laser beam management system

Motorized beam expander

Intended to simplify optical beam delivery in micromachining stations, BEAM module is installed between the laser and the scanning head. It integrates a motorized beam expander, a power meter, and an attenuator in a single box.



Applications

Industry:

- > Microelectronics
- > Micromachining

Medical:

- > Medical Device Manufacturing

Key Features

- > Beam expander
- > Attenuator
- > Power meter
- > Easy to integrate, control and align

Specifications

Beam

Motorized Shutter	Closed safety position
Beam Expander	Fixed or motorized from x1 to x5
Polarization Converter	Circular or linear polarization fixed or motorized
Motorized Attenuator	From 2% to 98%
Power Sampling	Power diagnosis during the process
Power Measurement	From 0 to 100 W

Utilities

Dimensions	39,7 x 21 x 13 cm
Weight	9 kg
Interface	Ethernet - GigE RJ45
Power Supply	24 V - 2A

Compatibility



Satsuma



Tangor



Yuja